



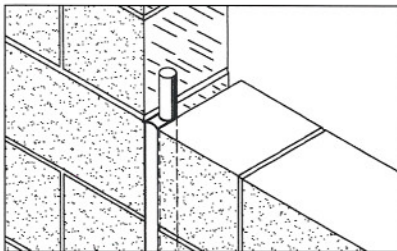
INTUMASTIC

Test Performance

Warrington Fire Research.
27th February 1995
Report R11848B
Warrington Fire Research.
1st December 1994
Report R11416
IMO A653(16)/MSC 61(67)Pt5
Chiltern International Fire Ltd
21 November 2000
IF00057
Lloyds Register.

Application

Used to provide a flexible seal to joints up to 25mm requiring movement of $\pm 10\%$. It is applied against a polyethylene backing rod to a width to depth ratio of 1:1 (so a 20mm gap requires a 20mm depth of sealant). A primer is not required on most clean masonry surfaces. Can also be used to seal around pipes and cables where low movement is expected.



Description

A water based acrylic intumescent sealant supplied in 310ml cartridges. Tested up to 4 hours integrity and insulation. Available in white. Red and grey available to special order.

Firetherm Intumastic can be over-painted with water or oil based paints. Firetherm suggest the use of polyethylene backing rods, available from Firetherm, to ensure maximum economy in use and to form the correct profile to the seal to allow movement without forcing the seal out of the gap.



Coverage

| | |
|------------------|---------------|
| 10mm wide seal - | 3.25m approx. |
| 15mm wide seal - | 1.35m approx. |
| 20mm wide seal - | 0.78m approx. |

Or use formula -

$$\frac{\text{Gap width (mm)} \times \text{sealant depth (mm)} \times \text{linear meters}}{310\text{ml}}$$

example -

$$\frac{10\text{mm gap} \times 10\text{mm depth} \times 100\text{m run}}{310\text{ml}} = 32.35 \text{ tubes}$$

Specification Wording

"Apply Firetherm Intumastic to a suitable depth at a 1:1 width to depth ratio to achieve up to 4 hours fire resistance, fully in accordance with Firetherm's installation instructions.

Firetherm, Crayford, England. Tel: +44 (0) 1322 551010; Fax: +44 (0) 1322 552727".



Firechem supports FIRAS Accredited Installers



Formerly ASFPCM



Above Logo's Are
Company Approvals
only. Please Check
For Individual
Product Approvals.